

MAIN FIGURE			
SIDES (metres)	ANGLES OF DIRECTION	SYSTEM W.G.27 CO-ORDINATES (metres)	
		CONSTANTS	Y X
A-B	429.64	0.00	0.00
B-C	159.04	-64 794.15	+3 668 592.69
C-D	111.39	-64 851.02	+3 669 018.55
D-E	62.00	-64 892.80	+3 669 002.42
E-F	34.80	-64 895.45	+3 668 891.06
F-G	29.63	-64 894.81	+3 668 877.59
G-H	29.63	-64 890.11	+3 668 877.59
H-I	25.02	-64 879.29	+3 668 920.59
I-J	8.71	-64 854.02	+3 668 924.73
J-K	16.04	-64 847.39	+3 668 956.71
K-L	42.49	-64 800.58	+3 668 865.09
L-M	16.04	-64 852.00	+3 668 824.57
M-N	3.92	-64 845.40	+3 668 925.27
N-P	72.77	-64 800.58	+3 668 865.09
P-Q	6.68	-64 852.00	+3 668 824.57
Q-R	71.85	-64 800.58	+3 668 865.09
R-A	559.89	-64 794.15	+3 668 592.69
A=B			
B=C			

DESCRIPTION OF BEACONS	
RM1, RM2, RM3	12mm Round Iron peg
B	20mm Round iron peg
G.D.E.H.J.K	15mm Round iron peg
P.Q.R	Iron standard in concrete
a.b.c.N	Not beacons
All other beacons are	12mm Round iron pegs

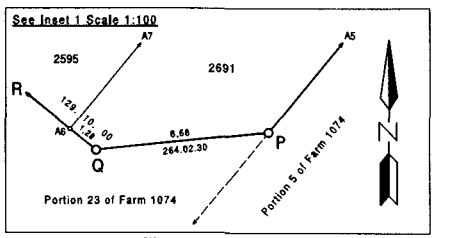
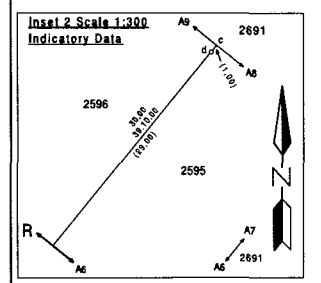
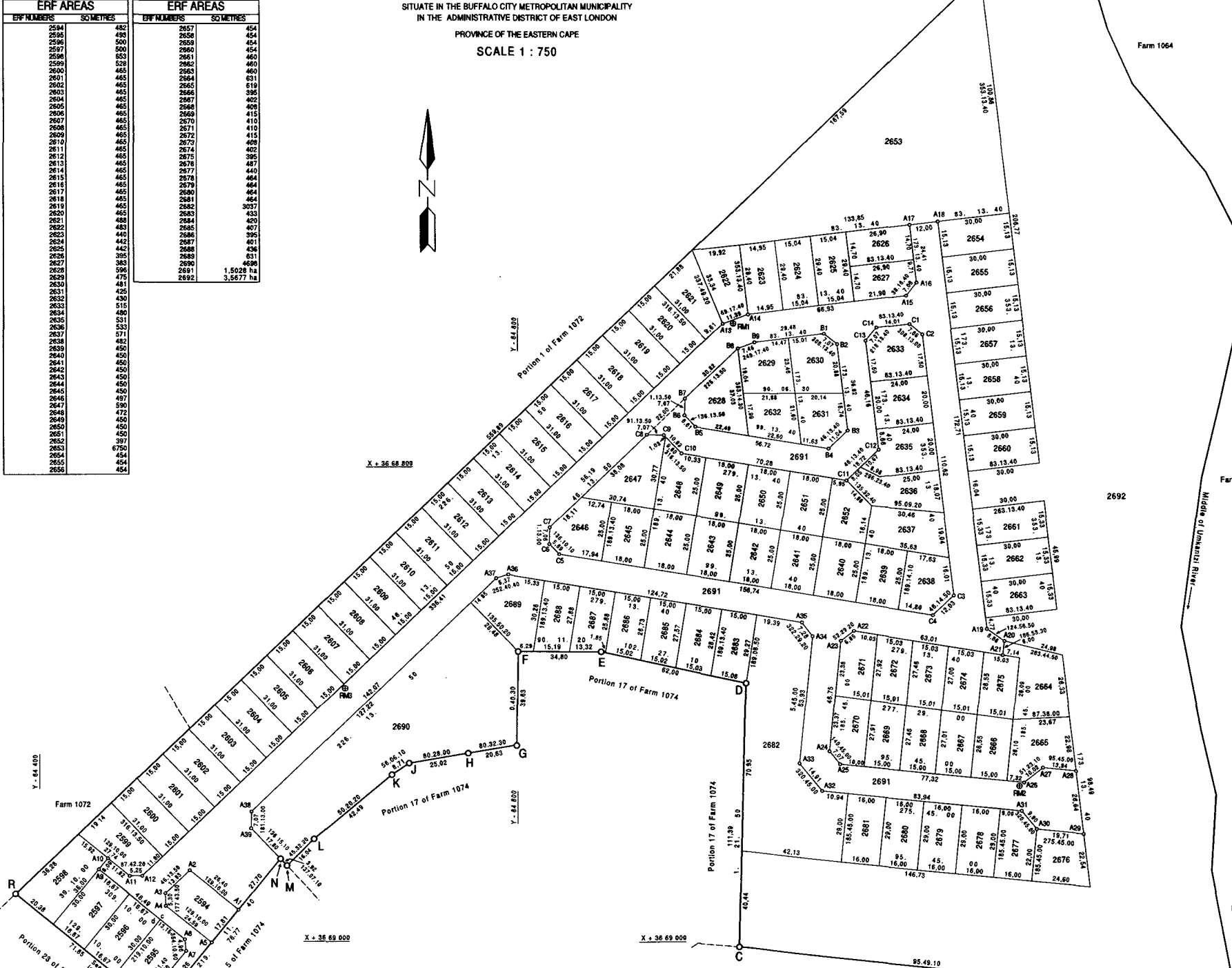
**KWT**  
 (KIDDS BEACH ALLOTMENT AREA)  
**GENERAL PLAN No. 171 / 2020**  
**OF**  
**SUBDIVISIONS OF ERF 717 KIDDS BEACH**  
 VIDE DIAGRAM No. 3354/2010  
 DEED OF TRANSFER No.  
 AND COMPRISING 99 ERVEN NUMBERED  
 2594 - 2692  
 SITUATE IN THE BUFFALO CITY METROPOLITAN MUNICIPALITY  
 IN THE ADMINISTRATIVE DISTRICT OF EAST LONDON  
 PROVINCE OF THE EASTERN CAPE  
**SCALE 1 : 750**

TRIGONOMETRICAL BEACONS			
SYSTEM W.G.27 CO-ORDINATES (metres)			
CONSTANTS		Y	X
		± 0.00	± 0.00
Gulu (No. 68)    △    - 66 179.55    +3 666 027.05			
Prospect (No. 199)    △    - 61 304.07    +3 664 923.24			

ERF AREAS		ERF AREAS	
ERF NUMBERS	SC METRES	ERF NUMBERS	SC METRES
2594	482	2657	454
2595	498	2658	454
2596	500	2659	454
2597	500	2660	454
2598	523	2661	460
2599	528	2662	460
2600	465	2663	460
2601	465	2664	521
2602	465	2665	419
2603	465	2666	460
2604	465	2667	460
2605	465	2668	409
2606	465	2669	415
2607	465	2670	410
2608	465	2671	410
2609	465	2672	415
2610	465	2673	409
2611	465	2674	402
2612	465	2675	385
2613	465	2676	487
2614	465	2677	440
2615	465	2678	464
2616	465	2679	464
2617	465	2680	464
2618	465	2681	464
2619	465	2682	3037
2620	465	2683	433
2621	465	2684	464
2622	440	2685	396
2623	440	2686	401
2624	442	2687	406
2625	442	2688	406
2626	326	2689	401
2627	383	2690	401
2628	396	2691	401
2629	396	2692	1,522.84
2630	475		3,577.74

REFERENCE MARKS			
SYSTEM W.G.27 CO-ORDINATES (metres)			
CONSTANTS		Y	X
		± 0.00	± 0.00
RM1    ●    - 64 690.07    +3 668 739.29			
RM2    ●    - 64 810.27    +3 668 934.19			
RM3    ●    - 64 527.66    +3 668 930.19			

CO-ORDINATES			
SYSTEM W.G.27 CO-ORDINATES (metres)			
CONSTANTS		Y	X
		± 0.00	± 0.00
A1	-64 483.06	+3 668 986.55	
A2	-64 482.59	+3 668 969.87	
A3	-64 482.59	+3 668 978.51	
A4	-64 452.74	+3 668 994.81	
A5	-64 452.74	+3 668 995.24	
A6	-64 444.40	+3 668 024.46	
A7	-64 461.14	+3 668 003.92	
A8	-64 424.60	+3 668 969.82	
A9	-64 424.60	+3 668 972.22	
A10	-64 424.60	+3 668 972.22	
A11	-64 437.55	+3 668 972.43	
A12	-64 437.55	+3 668 972.22	
A13	-64 437.55	+3 668 972.22	
A14	-64 437.55	+3 668 972.22	
A15	-64 437.55	+3 668 972.22	
A16	-64 437.55	+3 668 972.22	
A17	-64 437.55	+3 668 972.22	
A18	-64 437.55	+3 668 972.22	
A19	-64 437.55	+3 668 972.22	
A20	-64 437.55	+3 668 972.22	
A21	-64 437.55	+3 668 972.22	
A22	-64 437.55	+3 668 972.22	
A23	-64 437.55	+3 668 972.22	
A24	-64 437.55	+3 668 972.22	
A25	-64 437.55	+3 668 972.22	
A26	-64 437.55	+3 668 972.22	
A27	-64 437.55	+3 668 972.22	
A28	-64 437.55	+3 668 972.22	
A29	-64 437.55	+3 668 972.22	
A30	-64 437.55	+3 668 972.22	
A31	-64 437.55	+3 668 972.22	
A32	-64 437.55	+3 668 972.22	
A33	-64 437.55	+3 668 972.22	
A34	-64 437.55	+3 668 972.22	
A35	-64 437.55	+3 668 972.22	
A36	-64 437.55	+3 668 972.22	
A37	-64 437.55	+3 668 972.22	
A38	-64 437.55	+3 668 972.22	
A39	-64 437.55	+3 668 972.22	
B1	-64 726.51	+3 668 743.75	
B2	-64 734.06	+3 668 748.12	
B3	-64 738.38	+3 668 784.48	
B4	-64 738.41	+3 668 782.12	
B5	-64 874.42	+3 668 743.02	
B6	-64 869.85	+3 668 778.25	
B7	-64 870.00	+3 668 771.18	
B8	-64 892.26	+3 668 749.89	
B9	-64 899.24	+3 668 747.22	
C1	-64 764.26	+3 668 739.50	
C2	-64 764.26	+3 668 743.17	
C3	-64 782.85	+3 668 853.72	
C4	-64 782.85	+3 668 853.72	
C5	-64 774.10	+3 668 862.04	
C6	-64 817.47	+3 668 836.58	
C7	-64 813.39	+3 668 832.33	
C8	-64 813.39	+3 668 832.33	
C9	-64 813.39	+3 668 832.33	
C10	-64 813.39	+3 668 832.33	
C11	-64 813.39	+3 668 832.33	
C12	-64 813.39	+3 668 832.33	
C13	-64 813.39	+3 668 832.33	
C14	-64 813.39	+3 668 832.33	



S.G. No. 171 / 2020

Approved: \_\_\_\_\_  
 for Surveyor-General  
**2020-03-13**

Approved in terms of Section 25 of Ordinance 15/1985  
 REF. 11891/TP  
 Date: 28 April 2016

Approved in terms of Sections 30 and 42 of Ordinance 15/1985  
 REF. 7183/TP  
 Date: 23 January 2020

Approved in terms of Section 55 of the Splems By-Law Act 16/2013  
 REF. 7183/TP  
 Date: 23 January 2020

Exempt from Provisions of Act 70 of 1976  
 Section 1(a)

ENDORSEMENTS					
No.	AMENDMENT	ADDITION	AUTHORITY	INTD	DATE

S.G. OFFICE NOTES

SURVEYED IN SEPTEMBER TO OCTOBER 2016, MAY TO JUNE 2017 AND DECEMBER 2019  
 by me \_\_\_\_\_

File No. Eln. 1074  
 Survey Records No.: 43/2020

N.R. HENDERSON (PLS 0808)  
 Professional Land Surveyor

Compilation  
 RO-20094  
 RO-20094  
 LPI 02020096

(2251)  
 (4442)